

Acreage For Sale

954 Hwy 11, St. Paul, NE • \$69,000 -- 3 Acres



Property Features:

Bedrooms: 5

Baths: 1

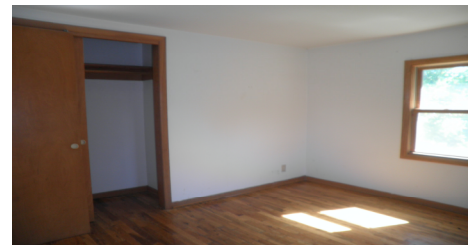
Sq. Ft. Total: 1,568

Year Built: 1915

Taxes: \$1,000.24

Lot Size: 3 acres

Legal: Kevin's Way Sub..
in the SW1/4NW1/4 of 23-14-11
Howard County, NE



Five bedroom home with beautiful oak floors situated on 3 acres south of Hwy 92 and Hwy 11 junction. New roof in 2008. New septic and leach field in 2009. Includes stove and refrigerator. Lots of possibilities. Room for livestock, large garden, build a shop/garage. Enjoy country living and a great location right on Hwy 11. All electric home. Nice large shelter belt on the west and north acreage boundaries.

Call Kay @ 308.750.4514 or visit : www.meyerrealtystpaul.com • E-mail: kaymeyer@gpcom.net